

ENGLISH

WIFI 2.0 - KLOVER HOME

External Module

Built-in module



INSTALLATION
USEFUL ADVICE



FUOCO E PASSIONE

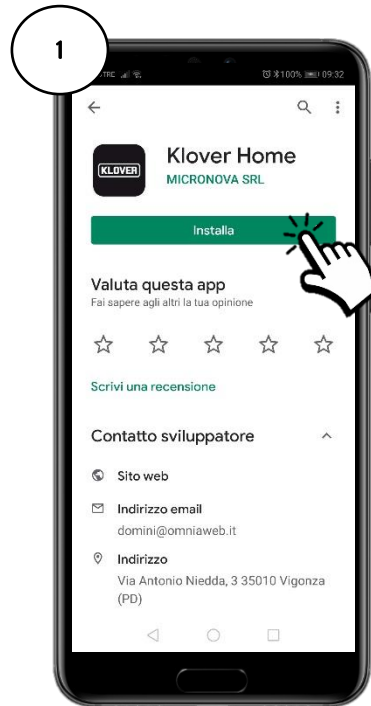
Contents

Installing the KLOVER HOME App	3
Creating an access account	4
Registering and associating the product and the WiFi module	5
Connecting the module to the WiFi internet network	7
Connecting to the WiFi internet network via Bluetooth (<i>recommended</i>).....	8
Connecting to the WiFi internet network via WiFi.....	9
Connecting to the WiFi internet network directly via WPS (<i>only available on built-in module</i>).....	12
Managing the product via internet connection.....	13
Managing the product via Bluetooth connection.....	14
Remote assistance.....	15
Problems / Causes / Solutions.....	16
Memorandum.....	17

The following section explains the procedure for configuring the WiFi module 2.0 with the KLOVER HOME App.

1. Installing the KLOVER HOME App

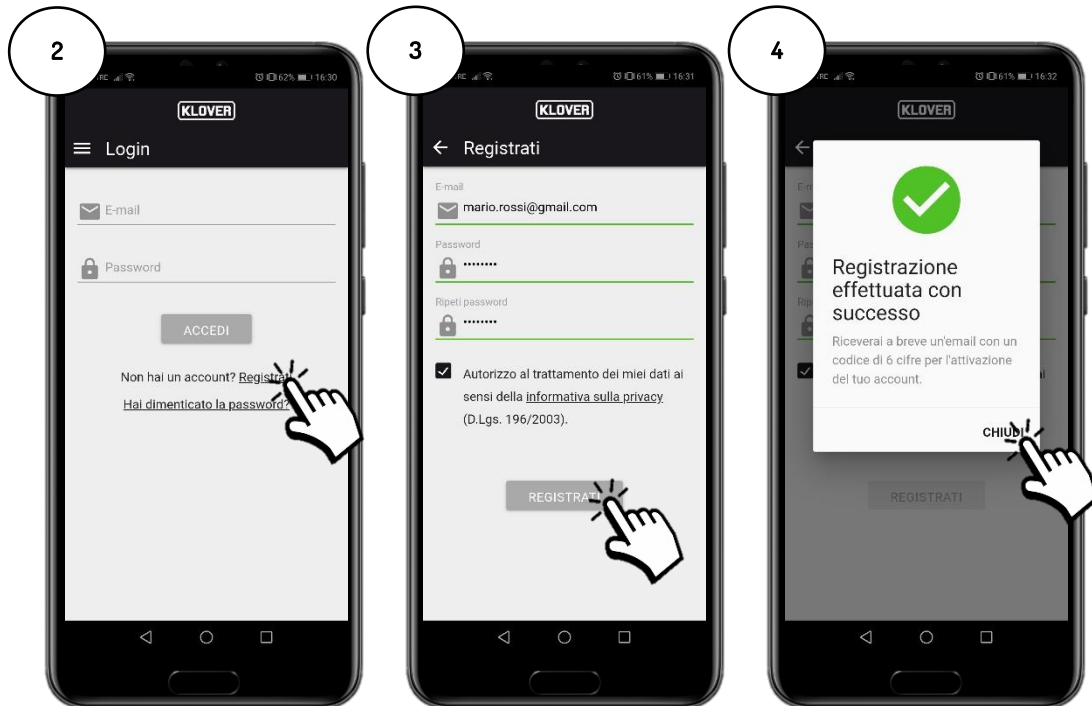
- 1.1. Download the KLOVER HOME App from your relevant store (Apple Store or Google Play) (Fig. 1), and open it.



2. Creating an access account

2.1. Create your own access account by tapping on Register (Fig. 2).

Enter your Email, Password and Confirmation for “Authorising the processing of your own data according to the privacy code”, then tap on “Register” (Fig. 3).



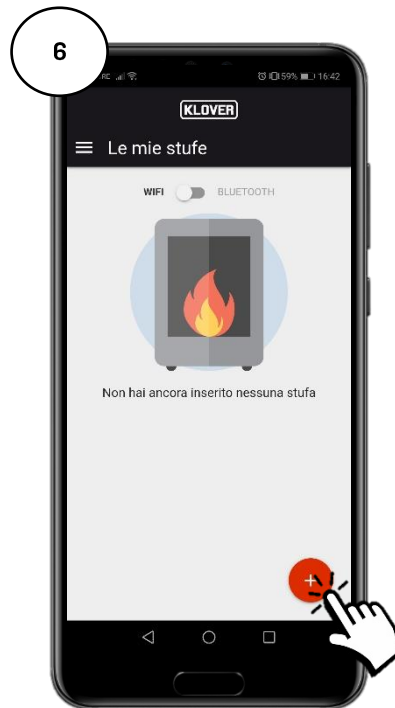
2.2. Confirm activation of the account by entering the activation code received via email and then tap on “Activate” (Fig. 5).

If you do not receive the email, check the spam folder in your email box (the email sender is agua@micronovasrl.com)



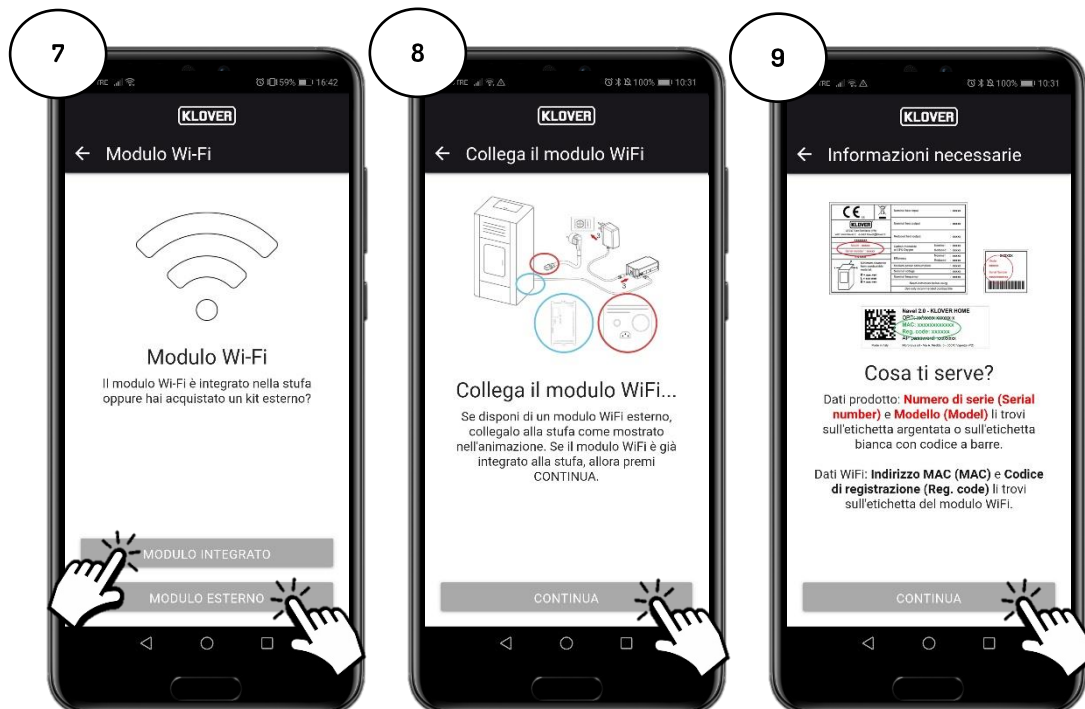
3. Registering and associating the product and the WiFi module

3.1. Enter the product to be controlled by pressing “+” (Fig. 6).

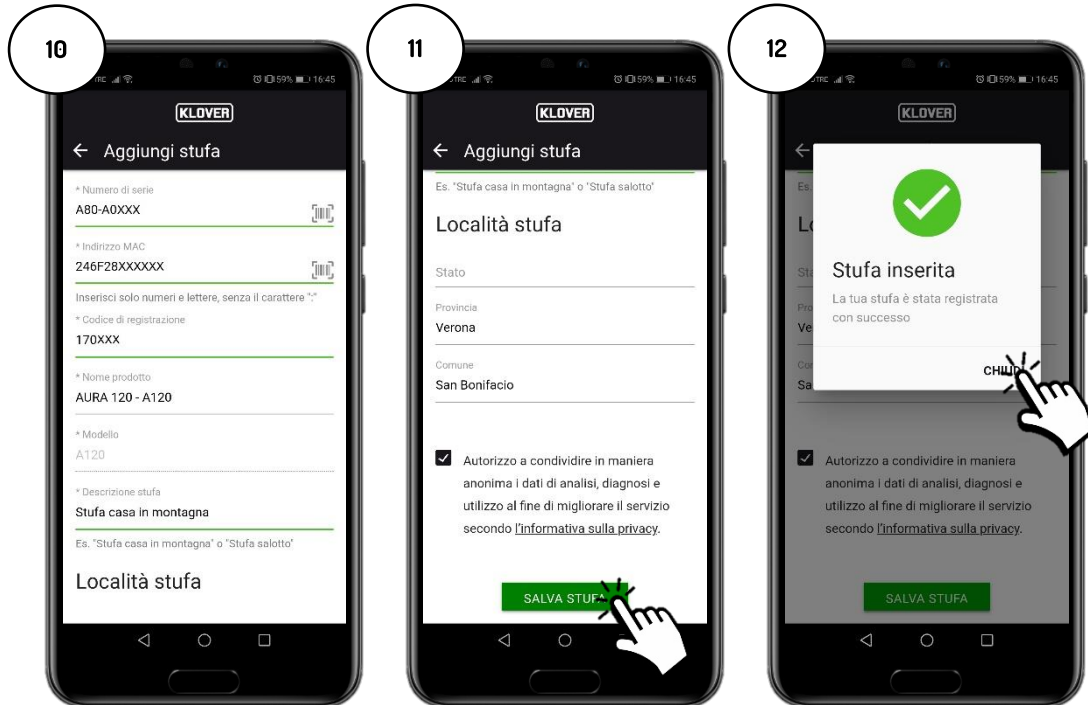


3.2. Select the type of WiFi module to be registered (built-in or external module) (Fig. 7).

Then, follow the guided procedure.



3.3. Enter the “Serial Number” of the product, the “MAC address” and “Registration code” specified on the WiFi module label, and the “Product Name” and “Product Code” specifies on the CE label applied to it. Then, enter the Country, State/Region and Town/City where the product is installed and confirm “*Authorisation in accordance with the privacy code*”, then tap on “Save Stove” (Fig. 11).



The details requested above are specified on the following labels:

Product details

 37047 San Bonifacio (VR) web: www.klover.it e-mail: klover@klover.it	Nominal heat input	: xxxxxx
	Nominal heat output	: xxxxxx
xxxxxxxx Model : xxxxxx Serial number : xxxxxx	Reduced heat output	: xxxxxx
 Minimum clearance from combustible material: R = xxx mm L = xxx mm B = xxx mm	Carbon monoxide at 13% Oxygen	Nominal : xxxxxx Reduced : xxxxxx
	Efficiency	Nominal : xxxxxx Reduced : xxxxxx
	Medium power consumption	: xxxxxx
	Nominal voltage	: xxxxxx
	Nominal frequency	: xxxxxx
	<i>Read instruction before using</i>	
	<i>Use only recommended combustible</i>	

WiFi Module details

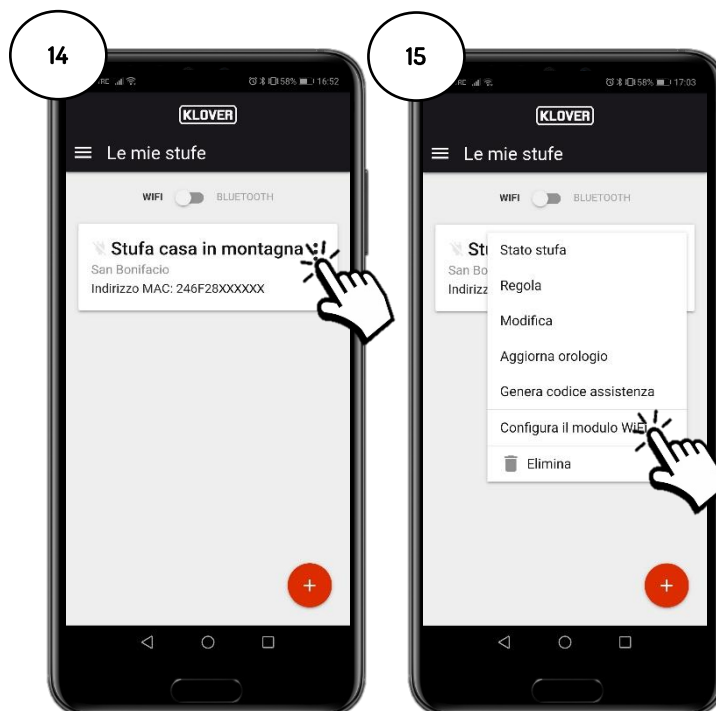
4. Connecting the module to the WiFi internet network

4.1. Continue with the configuration and select the mode to be used for connecting the module to the WiFi internet network created by the modem/router (Fig. 13). The three possible modes are as follows:

- A. Connecting to the WiFi internet network via Bluetooth *(recommended)*.
- B. Connecting to the WiFi internet network via WiFi.
- C. Connecting to the WiFi internet network directly via WPS *(only available on built-in module)*.



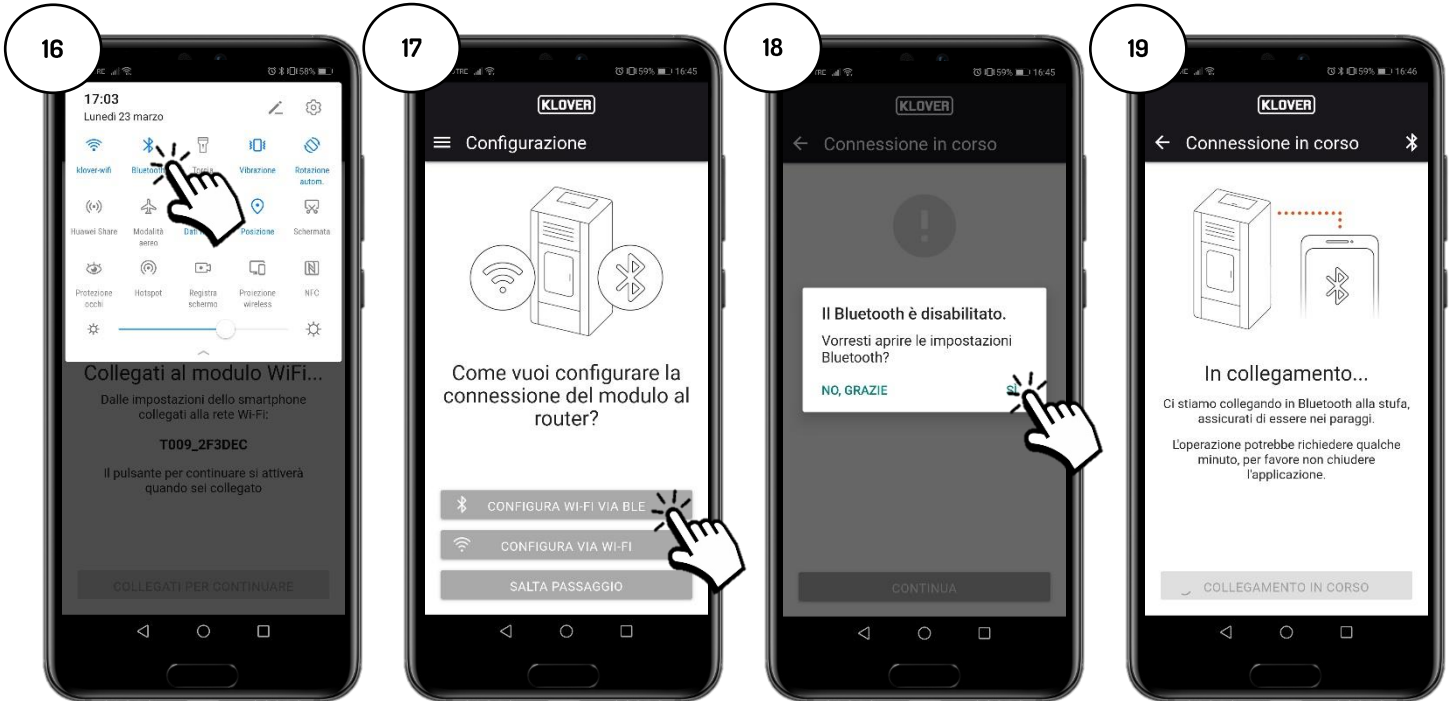
If you have exited this screen session by mistake, you can enter again on the main menu by pressing on the “three dots” (Fig. 14) and then on “Configure the WiFi module” (Fig. 15).



A. Procedure for connecting to the WiFi internet network via Bluetooth (recommended)

1A Before proceeding, enable the Bluetooth on your smartphone (Fig. 16) and remain close to the WiFi module (not more than 2 m away).

Then, select "Configure WiFi via BLE" (Fig. 17) and follow the guided procedure.



2A Select the WiFi network you wish to connect to (Fig. 20). Enter the password of the network and select "Connect to the selected network" (Fig. 21). If the password was entered correctly, a confirmation screen will appear at the end of the procedure (Fig. 23).



B. Procedure for connecting to the WiFi internet network via WiFi

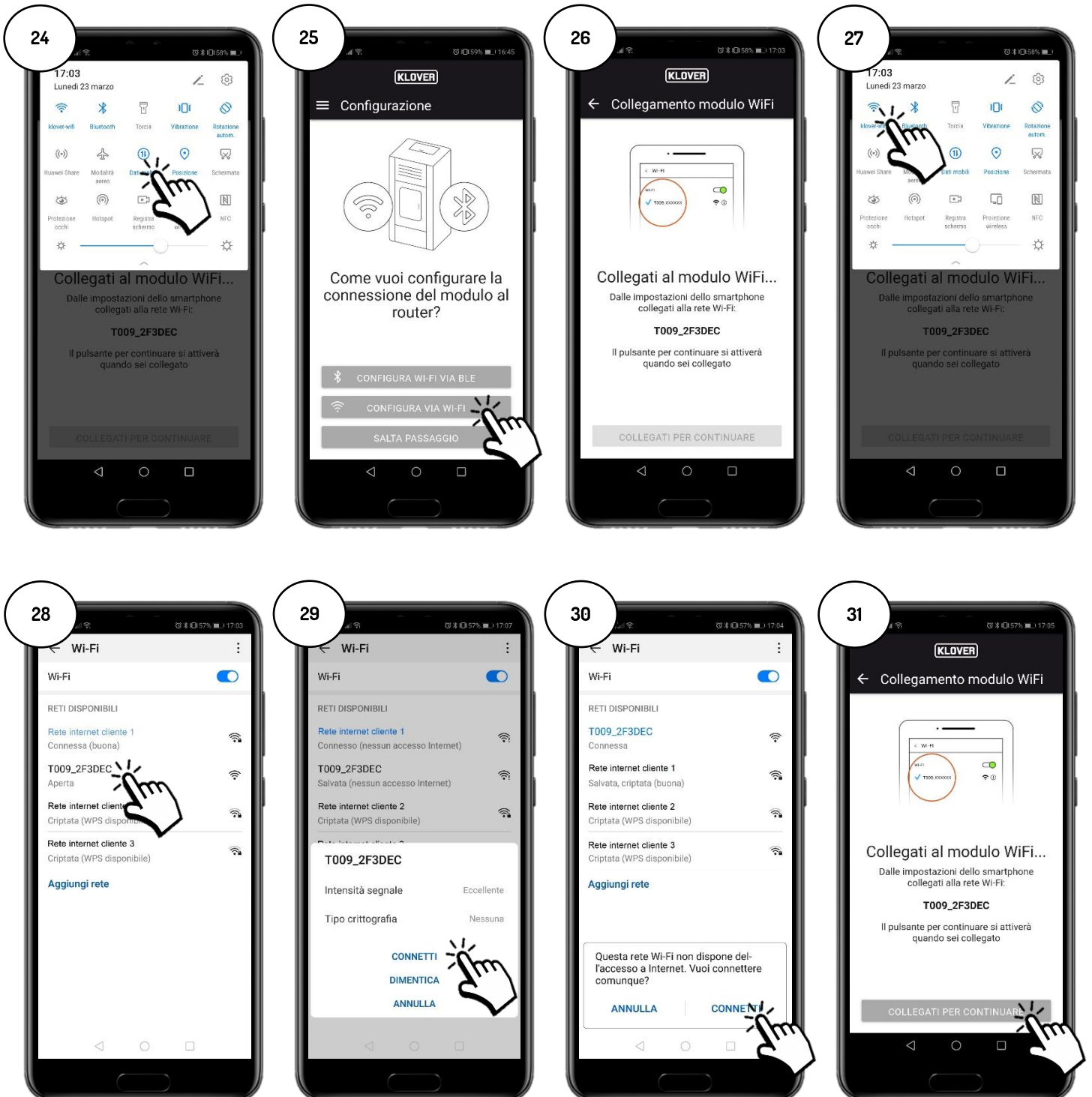
1B Before proceeding, we recommend temporarily disabling “Mobile data” (Fig. 24).

Then, select “Configure via WiFi” (Fig. 25) and follow the guided procedure.

Remaining close to the WiFi module (not more than 2 m away), enable your smartphone’s WiFi (Fig. 27) and search through the various WiFi networks available for the network named with the code specified above (the WiFi module network always has the prefix “T009_”) (Fig. 28), and then connect to it (Fig. 29).

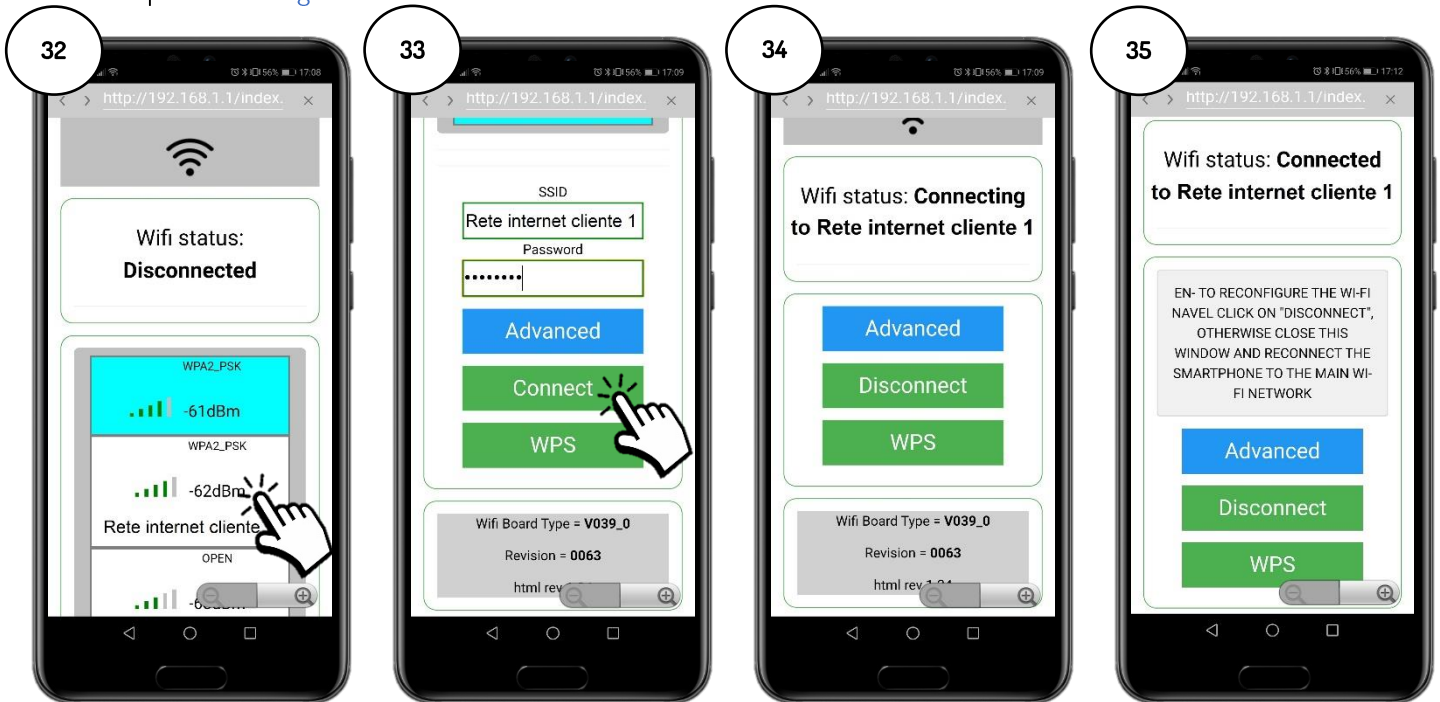
N.B.: confirm to proceed without accessing internet if your smartphone requires you to (Fig. 30).

Then, go back to the App and select “Connect to continue” (Fig. 31).



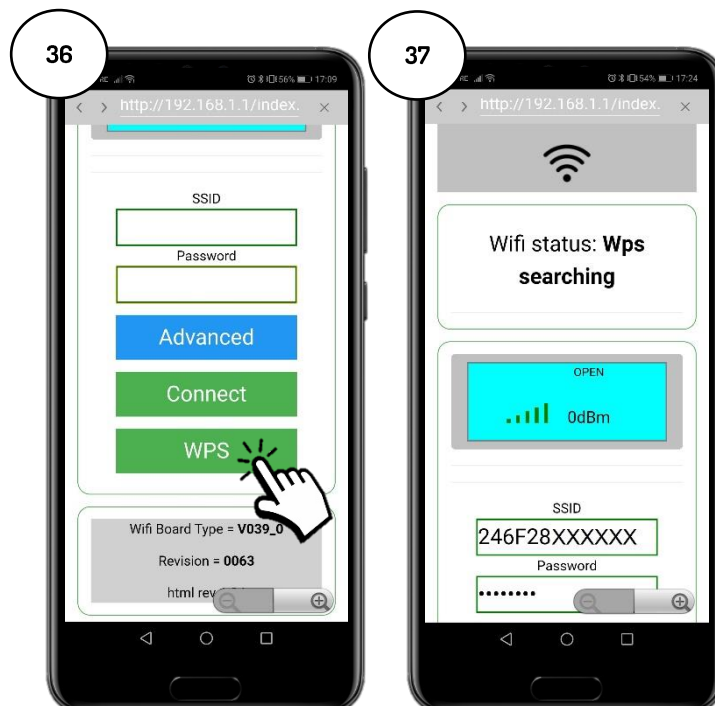
2B Select the WiFi network you wish to connect to (Fig. 32). Enter the password of the network and select “Connect” (Fig. 33).

If the password was entered correctly, a confirmation message “Connected to...” will appear at the end of the procedure (Fig. 35).



In order to easily associate the WiFi module with the internet modem/router, you can make the connection by using the WPS procedure. In this case, you will not be asked to enter the WiFi internet network password.

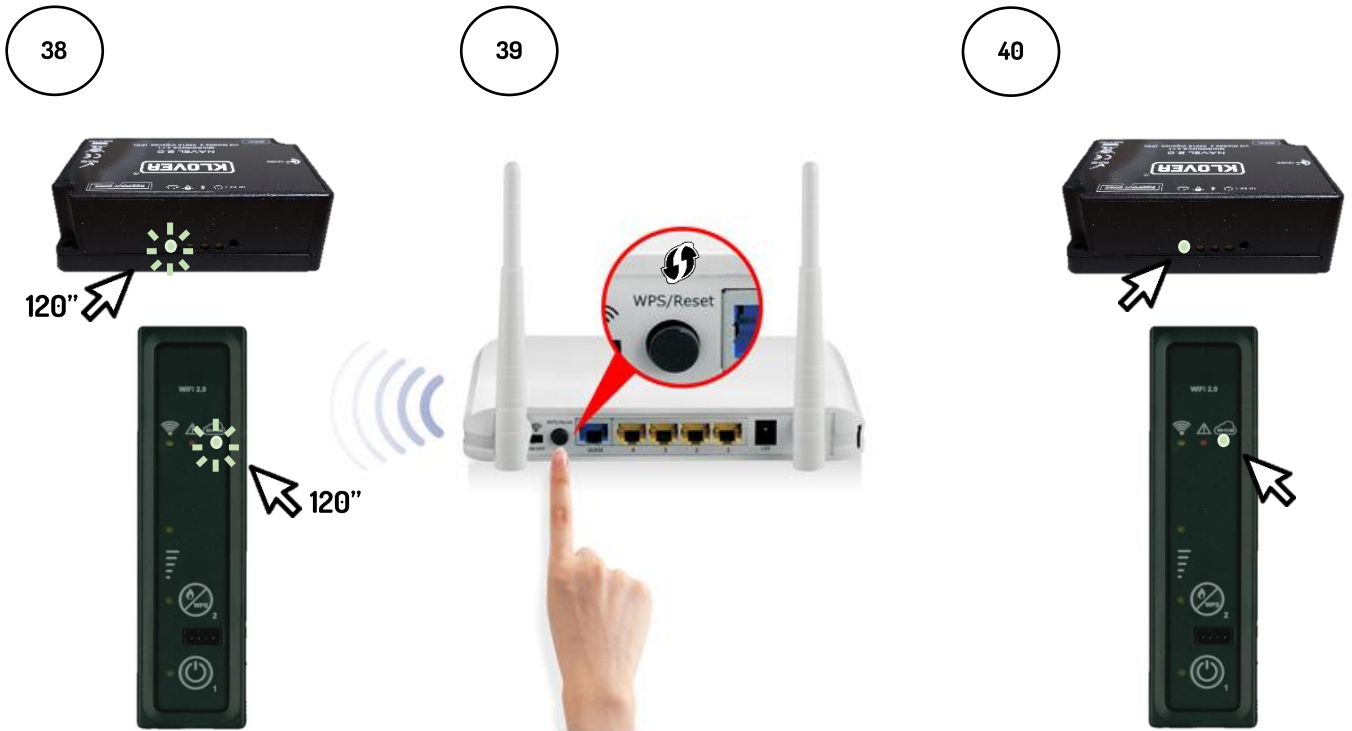
Then, select “WPS” (Fig. 36).



The WiFi module enters the WPS search mode for 120 seconds (Fig. 38).

During this period, press the WPS button on the modem/router or press and hold down (as per the instructions provided by the modem/router manufacturer) (Fig. 39).

When the connection has been successfully completed, the green WiFiMi LED will remain ON (Fig. 40). If the LED fails to light up, repeat the operation.



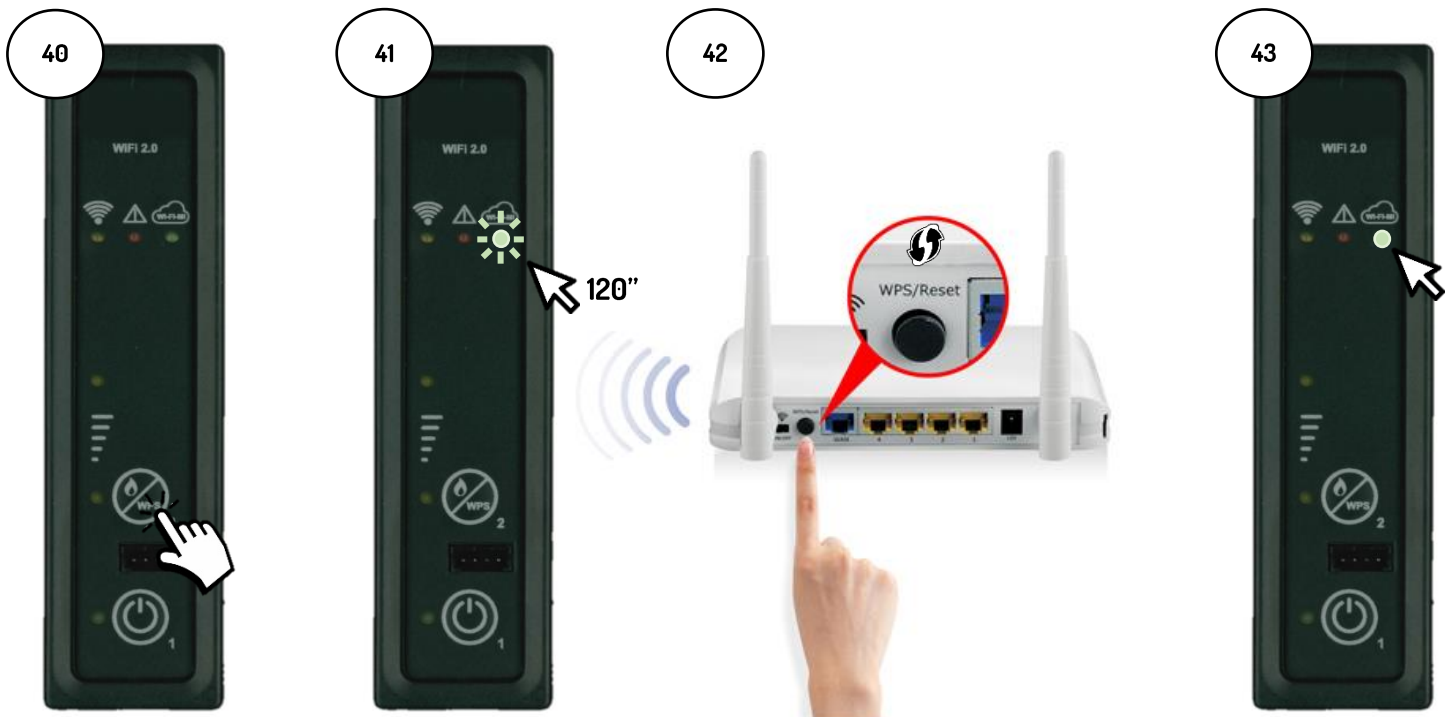
C. Procedure for connecting to the WiFi internet network directly via WPS *[only available on built-in module]*

1C Press and hold down button 2 (WPS) on the support panel for a few seconds (Fig. 40), until the green WiFiMi LED lights up.

The WiFi module enters the WPS search mode for 120 seconds (Fig. 41).

During this period, press the WPS button on the modem/router or press and hold down (as per the instructions provided by the modem/router manufacturer) (Fig. 42).

When the connection has been successfully completed, the green WiFiMi LED will remain ON (Fig. 43). If the LED fails to light up, repeat the operation.



5. Managing the product via internet connection

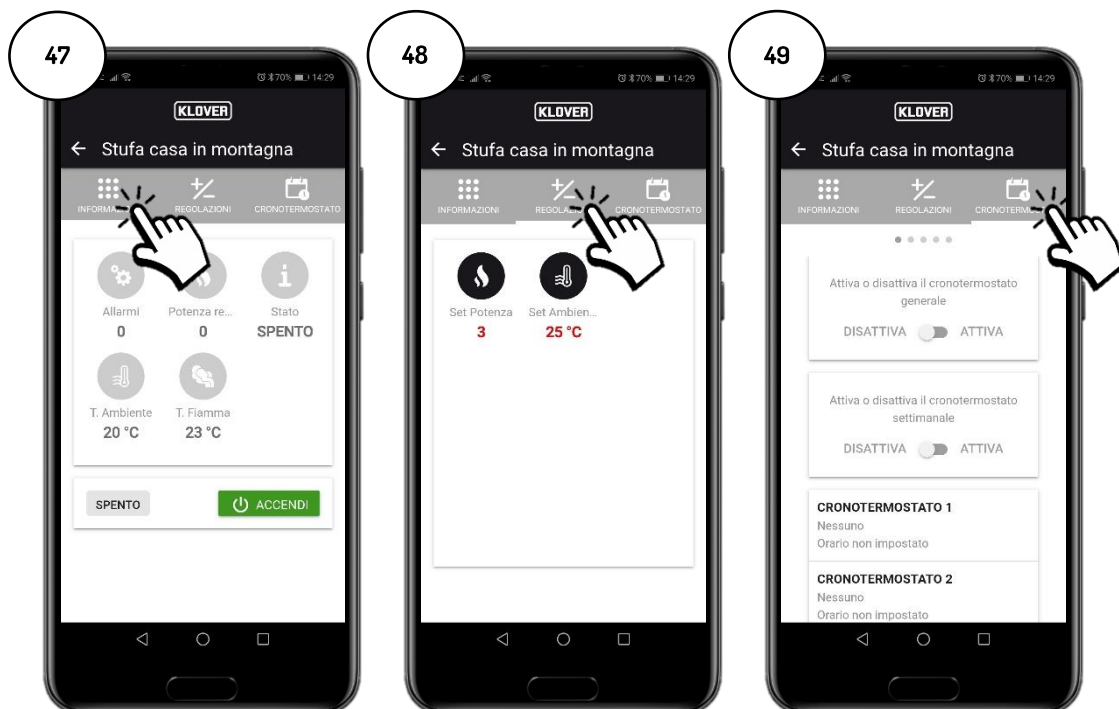
5.1. When you have completed the WiFi internet connection procedure, you can manage the product via your smartphone connected to the data network.

On the home screen, check that the electric plug symbol is enabled and that the module is correctly connected to the internet (Fig. 45).

Select the product you wish to manage. (Fig. 46)



5.2. Select the field you wish to view or edit (Information, Settings or Chronothermostat).



6. Managing the product via Bluetooth connection

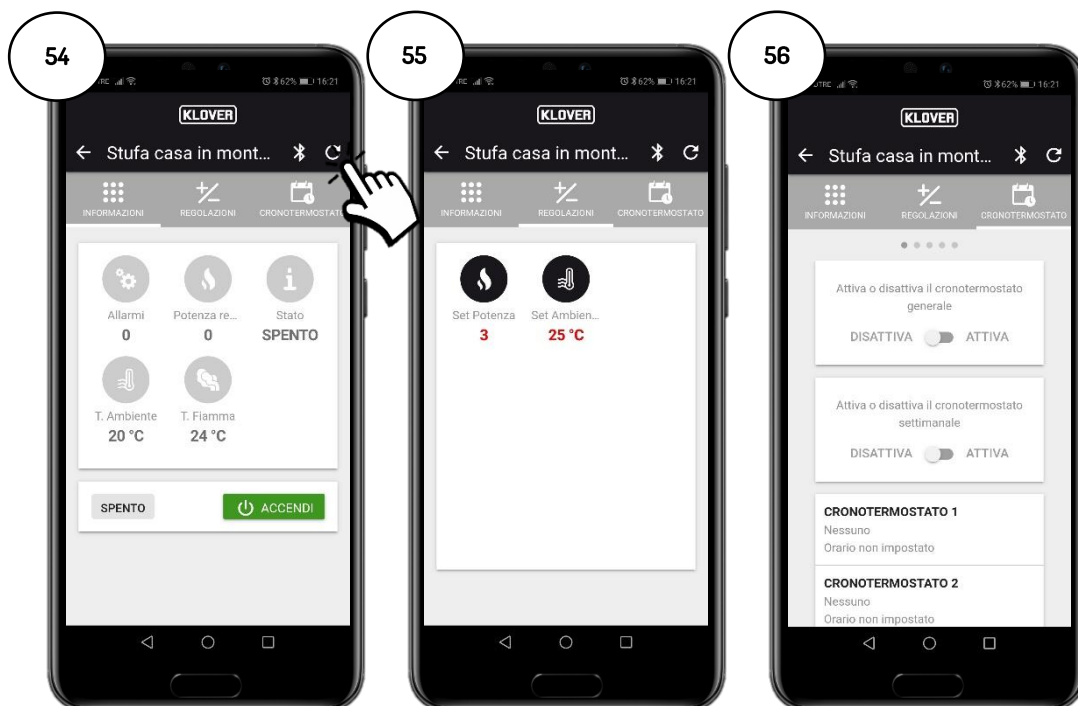
6.1. If you do not have a WiFi internet network, you can manage the product using a Bluetooth connection.

Before proceeding, enable the Bluetooth on your smartphone (Fig. 50) and then, on the home screen, enable the Bluetooth connection (Fig. 52).

The “Bluetooth” symbol will appear at the top right-hand corner of the screen. Then, select the product you wish to manage. (Fig. 53).



6.2. Select the field you wish to view or edit (Information, Settings or Chronothermostat). To refresh the data displayed on the screen, press the “Refresh” symbol at the top right-hand corner of the screen (fig. 54).

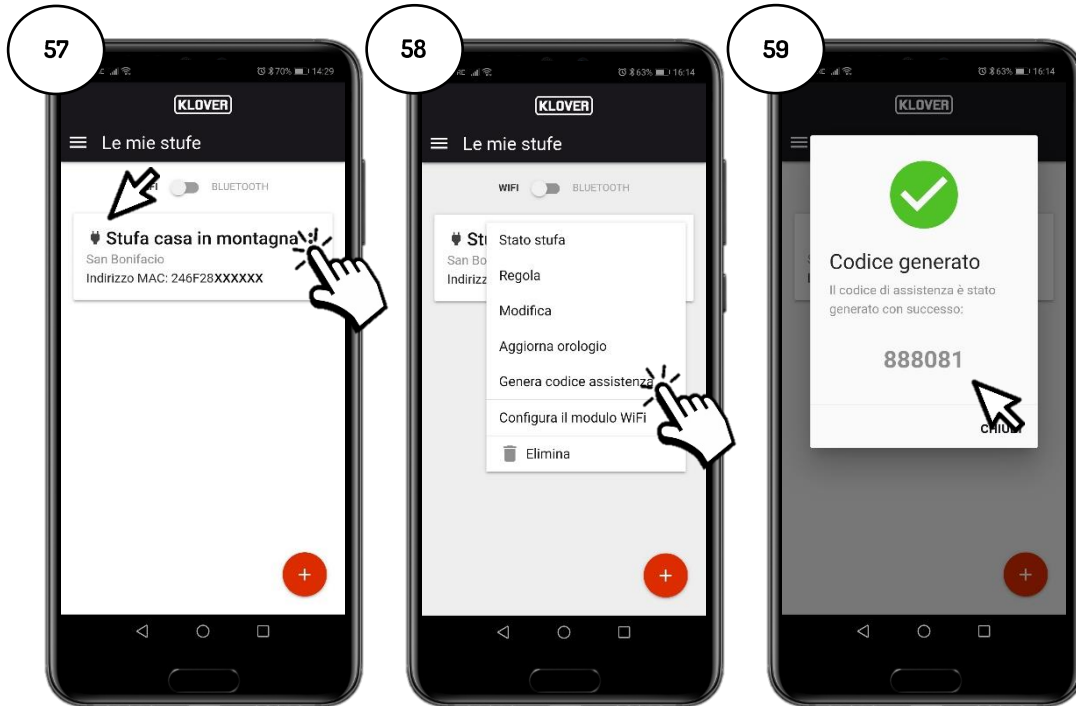


7. Remote Assistance

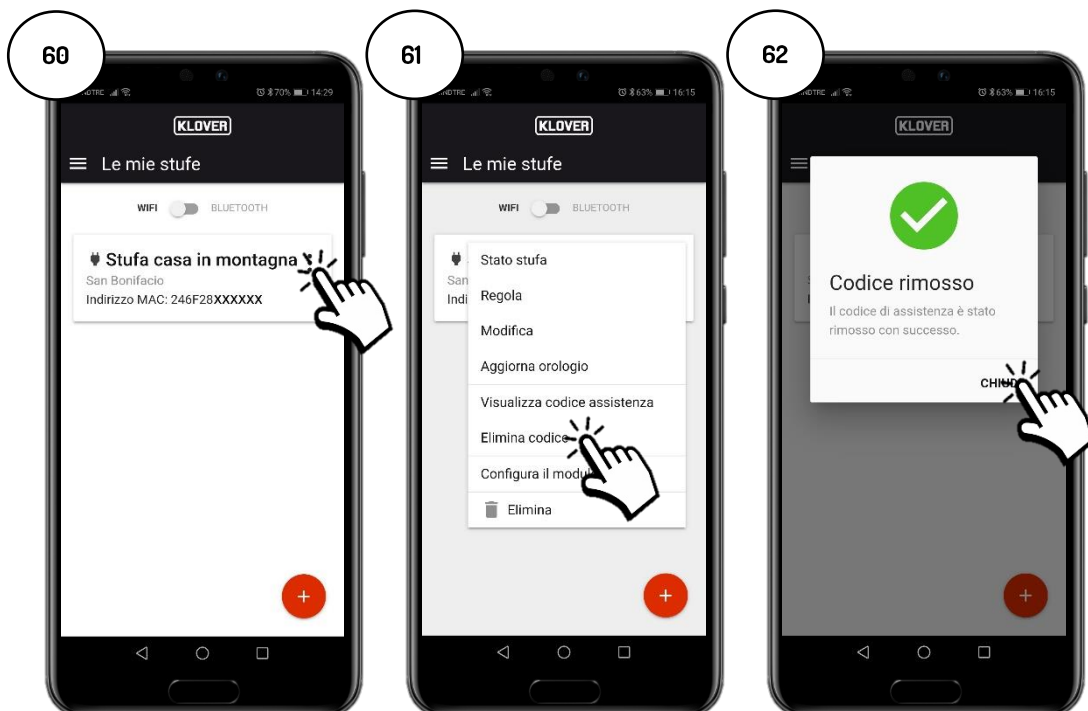
- 7.1. In order to receive remote assistance for your product, first check that the electric plug symbol is enabled and then that the module is correctly connected to the internet.

Enable remote access for the Authorised Technical Assistance Centre by tapping on the “three dots” (Fig. 57) and then “Generate assistance code” (Fig. 58).

Give the Authorised Technical Assistance Centre the generated code (Fig. 59).



- 7.2. To disable remote access for the Authorised Technical Assistance Centre, tap on the “three dots” (Fig. 60) and then “Remove code” (Fig. 61).



8. Problems, Causes and Solutions

PROBLEM	CAUSE	LED/PLUG STATUS	SOLUTION
Account activation code not received	Your email address was not entered correctly.	-	Repeat the procedure.
	The email sent by agua@micronovasrl.com ended up in the Spam folder in your email box.	-	Check your Spam folder.
Problems accessing the App	Incorrect password.	-	Tap on "Have you forgotten your password?" and follow the guided procedure in order to recover it.
	Incorrect email address.	-	Contact Klover assistance.
	Your smartphone has no internet connection.	-	Check the settings on your smartphone and/or contact the service provider.
	App version not updated.	-	Download the latest version from the store (Apple Store or Google Play).
Problems registering the product.	Incorrect product details.	-	Check and enter the serial number and product model (details specified on the silver label attached to the product).
	Incorrect WiFi Module details.	-	Check and enter the MAC address and registration code (details specified on the white label of the WiFi module).
	Privacy authorisation not confirmed.	-	Select privacy authorisation.
	Your product model is unavailable.	-	Contact Klover assistance.
WiFi module not connected to the internet network.	The procedure for connecting to the WiFi internet network was not performed correctly.	"WiFiMi" green LED is OFF "Plug" symbol is OFF	Repeat the procedure.
	The WiFi internet network password was non entered correctly.	"WiFiMi" green LED is OFF "Plug" symbol is OFF	Repeat the connection procedure by entering the correct password.
	The module has been connected to a WiFi network not connected to the internet.	"WiFiMi" green LED is ON "Plug" symbol is OFF	Repeat the connection procedure, making sure that you connect the module to a functioning WiFi internet network, whose service is enabled.
	Poor WiFi signal.	"WiFiMi" green LED is ON/OFF "Plug" symbol is ON/OFF	Move the WiFi modem/router closer.
	Problems with the internet network.	"WiFiMi" green LED is ON "Plug" symbol is ON/OFF	Contact the service provider.
	Problems with the modem/router WiFi network.	"WiFiMi" green LED is OFF "Plug" symbol is OFF	Contact the manufacturer of the modem/router.
	The WiFi module is not powered.	"WiFiMi" green LED is OFF "Plug" symbol is OFF	Check the connection of the WiFi module to the board and to the network power supply unit, if there is one.
WiFi module not connected to the Bluetooth network	Poor Bluetooth signal.	-	Move your smartphone closer to the WiFi module.
	Bluetooth signal not enabled on your smartphone.	-	Enable the Bluetooth signal on your smartphone.

Klover Srl declines all responsibility for any incompatibility of the App with the modem/router and/or internet service provider.

9. Memorandum

In order to remember the details specified during configuration, note them down in the following table. This data may be useful if you need assistance.

ACCOUNT DETAILS	
Email	
Password	
PRODUCT DETAILS	
Serial Number	
Product name / Model	
WIFI MODULE DETAILS	
MAC address	
Registration code	
AP password	
INTERNET NETWORK DETAILS	
Network name	
Password	

To ask for information or to make a report, send an email to supporto.wifi@klover.it specifying the following details:

- Screenshot of the detected error.
- Account email address.
- MAC address of the WiFi module.
- Internet service provider.
- Modem model.



F U O C O E P A S S I O N E

KLOVER Srl

Via A. Volta, 8

37047 San Bonifacio (VR)

VAT No. 02324280235

www.klover.it